



EXTERNAL AFFAIRS  
with Tim Goom

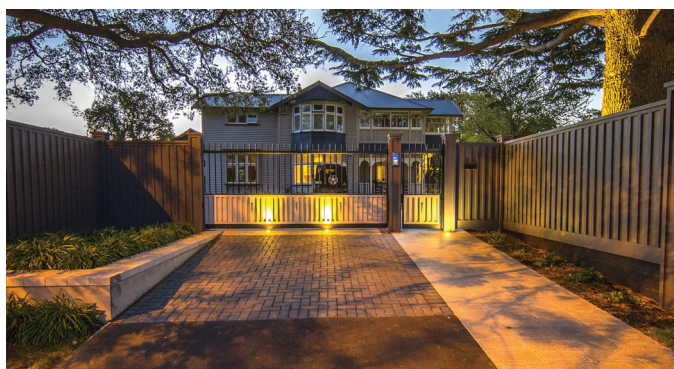
## Creating a sense of arrival

Your entranceway is the first thing visitors notice about your property, so ensuring it serves your purpose, both in terms of aesthetics and function is vital.

### Fencing

Your fence is important for keeping your family and pets safely within and conversely keeping any unwanted intruders out. This can be achieved without creating an imposing fortress-like wall that dominates your property and street frontage. At Goom Landscapes the ethos which generally informs our entrance design is to ensure security but in a way, that enhances street appeal. Including a partial setback is a wonderful way of giving a little back to the street and creating the space to soften fencing with lush planting. This can make a dramatic difference to the initial visual impact of your property but also the street.

There is a wonderful opportunity to add interest by changing materials and potentially heights with your fence. Mixing up materials will create more visual impact than a plain row of palings or a sea of solid plastered block wall. Tying in fencing materials with those used in the exterior of your home will also connect your landscape to your house to create cohesion.



by Goom

### Gates

In considering your entrance, the age-old challenge is what type of gate, if any, will work for your property. Often the back of the property may be internally fenced off, potentially minimising the need for a front gate at all. If a gate is preferred, then consideration should be given to whether a vehicle gate is sufficient, or whether both a vehicle and pedestrian gate are required. Having both enhances safety as it creates a clear delineation between where vehicles will drive in and where visitors will enter on foot. It may be that your frontage does not have the width required to accommodate both, and a gate must be fit for its purpose. Ensuring vehicle access is sufficient to not clip wing mirrors is necessary! From a design perspective, I think any gate should replicate elements of the front door to welcome and help guide visitors to your home. Gates can be manual or fully automated, as suits your purpose and budget.

### Lighting

Visitors arriving after dark will be pleased to have your path and stairs to your front door well-lit to avoid any unfortunate mishaps and ending up in the garden. Having your street number clearly illuminated will also be much appreciated by Uber drivers searching for their pickup. Destination lighting to differentiate vehicle access from pedestrian access will also enhance safety for those on foot. Apart from safety, lighting at your entranceway is a fantastic way to completely transform your street frontage after dark by focussing on distinctive features, such as up-lighting specific plants or trees or an illuminating garden sculpture or water feature.

### Letterbox

Although the amount of mail received has significantly reduced as online transactions have exponentially increased, a mailbox is still a necessity. An array of options are available, from the classic separate mailbox to a modern letterbox which is incorporated into your wall design to become part of the structure. Making a feature of your street number on either your wall, fence, or letterbox, (aside from being functional if visible) gives you the chance to firmly give the outside world a sense of your style from the street.

Enhancing the street appeal of your property is an investment in the aesthetic and value of your home. To book a consult to discuss improving your entranceway, call Goom Landscapes today on 0800 466 657.

## The champions of landscape design & build.

10 AWARDS - 2021



DESIGN | MANAGE | CONSTRUCT

Create a Lifespace™ with us. | [goom.nz](http://goom.nz)

  
Goom  
Landscapes